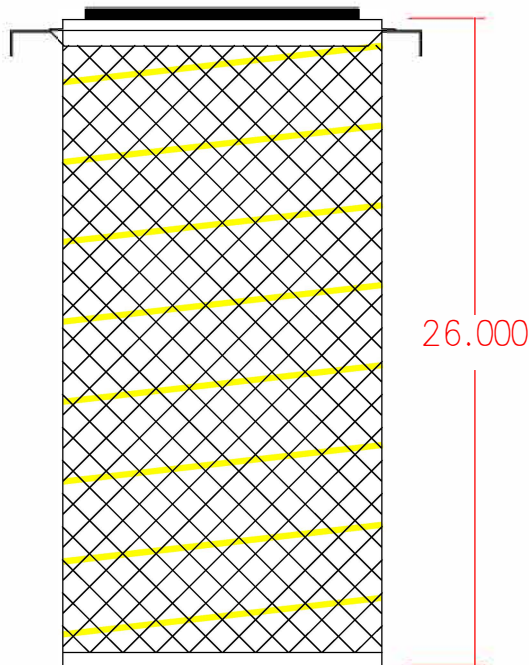
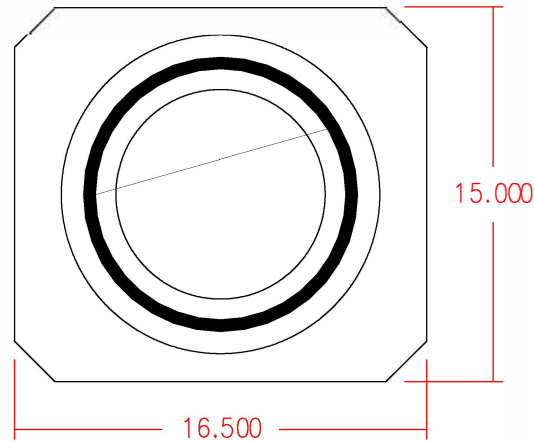
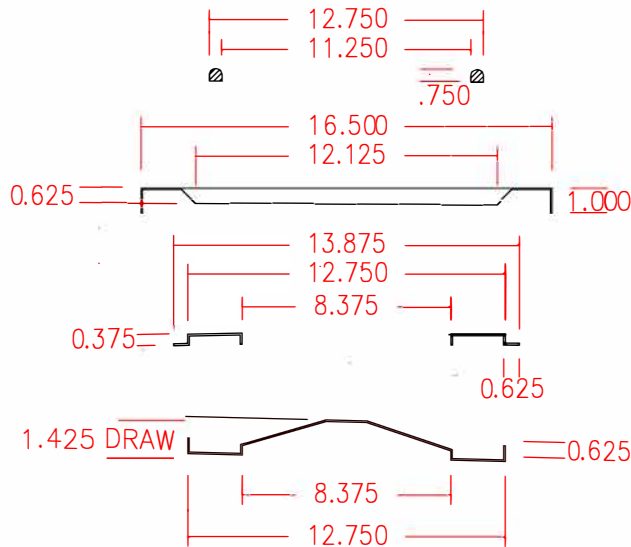


ACSF-314-FL



Air Cleaning Specialists, Inc.



CONSTRUCTION:

ELECTROPLATED GALVANIZED CLOSED END CAP NO BOLT HOLE
 ELECTROPLATED GALVANIZED OPEN END CAP w/ HEAVY MOUNTING FLANGE
 G- 90 GALVANIZED EXPANDED METAL OUTER BODY
 G- 90 GALVANIZED EXPANDED METAL INNER CORE
 225 SQUARE FEET ULTRALIFE NANOFIBER MEDIA
 EPDM RUBBER SEALING GASKET APPLIED TO ONE OPEN END CAP
 PVC SEALANT APPLIED TO BOTH ENDS
 HOT MELT ADHESIVE BEAD APPLIED OUTSIDE ONLY
 PACKAGED ONE PER CARTON
 WEIGHT: 17 POUNDS

EFFICIENCY: (PER ASHRAE 52.2- 2007)

TEST FLOW RATE: 650 CFM
 INITIAL RESISTANCE: 0.25 INCHES W.G.
 FINAL RESISTANCE: 4.00 INCHES W.G.
 E1 (%) COMPOSITE MINIMUM AVERAGE EFFICIENCY 0.30 - 1.00 MICRON: 85>E1
 E2 (%) COMPOSITE MINIMUM AVERAGE EFFICIENCY 1.0 - 3.0 MICRON: 90<E1
 E3 (%) COMPOSITE MINIMUM AVERAGE EFFICIENCY 3.0 - 10.0 MICRON: 95<E1
 MINIMUM EFFICIENCY REPORTING VALUE: MERV 15 @ 650 CFM